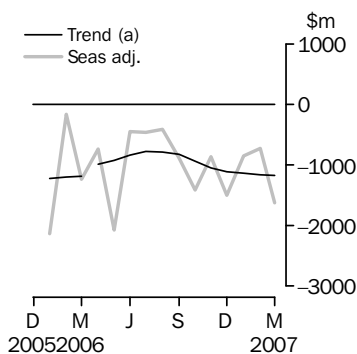


INTERNATIONAL TRADE IN GOODS AND SERVICES

AUSTRALIA

EMBARGO: 11.30AM (CANBERRA TIME) MON 7 MAY 2007

Balance on goods and services



(a) A trend break of \$150m to April 2006 has been applied.

KEY FIGURES

	January 2007 \$m	February 2007 \$m	March 2007 \$m	Feb 07 to Mar 07 % change
TREND				
Balance on goods and services	-1 131	-1 159	-1 172	..
Credits (exports of goods & services)	18 061	18 128	18 190	-
Debits (imports of goods & services)	19 192	19 287	19 362	-
SEASONALLY ADJUSTED				
Balance on goods and services	-843	-728	-1 622	..
Credits (exports of goods & services)	18 066	18 632	17 839	-4
Debits (imports of goods & services)	18 909	19 360	19 461	1

.. not applicable

- nil or rounded to zero (including null cells)

KEY POINTS

TREND ESTIMATES

- The provisional trend estimate of the balance on goods and services was a deficit of \$1,172m in March 2007, an increase of \$13m on the revised deficit in February.
- Goods and services credits rose \$62m to \$18,190m. Goods and services debits rose \$75m to \$19,362m.

SEASONALLY ADJUSTED ESTIMATES

- In seasonally adjusted terms, the balance on goods and services was a deficit of \$1,622m in March, an increase of \$894m on the revised deficit in February.
- Goods and services credits fell \$793m (4%) to \$17,839m. Non-rural and other goods fell \$819m (6%) while rural goods rose \$8m. Services credits rose \$19m.
- Goods and services debits rose \$101m (1%) to \$19,461m. Intermediate and other goods rose \$315m (4%) and capital goods rose \$13m while consumption goods fell \$203 (4%). Services debits fell \$23m (1%).

ORIGINAL ESTIMATES

- In original terms, the March 2007 balance on goods and services was a deficit of \$991m, an increase of \$824m on the revised deficit in February. Goods and services credits rose \$709m (4%) and goods and services debits rose \$1,533m (9%).
- In the nine months to March, exports of non-rural and other goods were up \$13.9b (15%) and rural goods were up \$0.5b (3%) on the corresponding period in 2005-06.

INQUIRIES

For further information about these and related statistics, contact the National Information and Referral Service on 1300 135 070 or Tom Jebbink on Canberra (02) 6252 5540.

NOTES

FORTHCOMING ISSUES

<i>ISSUE</i>	<i>RELEASE DATE</i>
April 2007	31 May 2007
May 2007	4 July 2007
June 2007	1 August 2007
July 2007	31 August 2007
August 2007	3 October 2007
September 2007	1 November 2007



REVISIONS

Revisions were made to incorporate the latest available data relating to merchandise trade, the quarterly survey of international trade in services and other administrative data. In original terms, these revisions have:

- decreased the deficit on goods and services for February 2007 by \$41m
- decreased the deficit on good and services for the eight months to February by \$104m
- increased the deficit on goods and services for 2005-06 by \$68m.

CHANGES TO THIS ISSUE

As announced in both the January and February issues, the format of the datacube containing seasonal adjustment factors has changed to align with the current standard of excel spreadsheets. The new format is available as Table 91.

AVAILABILITY OF DETAILED SERVICES DATA

The trade in services data cubes, listed under Time Series Data on page 4, for data on a calendar year basis to 2006 have been updated concurrently with this issue.



ABBREVIATIONS

\$b	billion (thousand million) dollars
\$m	million dollars
ABS	Australian Bureau of Statistics
APEC	Asia Pacific Economic Co-operation
ASEAN	Association of South-East Asian Nations
n.e.s.	not elsewhere specified
n.i.e.	not included elsewhere
OECD	Organisation for Economic Co-operation and Development
SAR	Special Administrative Region
SITC	Standard International Trade Classification

Brian Pink
Australian Statistician

CONTENTS

page

Time series data	4
----------------------------	---

ANALYSIS

Analysis and comments	5
---------------------------------	---

TABLES

INTERNATIONAL TRADE IN GOODS AND SERVICES – BALANCE OF PAYMENTS BASIS

1 Goods and services, summary, seasonally adjusted and trend estimates	10
2 Goods and services, summary, original	11
3 Goods credits, original	12
4 Goods debits, original	13
5 Goods credits, seasonally adjusted	14
6 Goods debits, seasonally adjusted	15
7 Goods credits, trend estimates	16
8 Goods debits, trend estimates	17
9 Services, summary, original	18
10 Services, summary, seasonally adjusted and trend estimates	19
11 Services, original, quarterly	20

INTERNATIONAL MERCHANDISE TRADE – RECORDED TRADE BASIS

12 International merchandise exports, by commodity	21
13 International merchandise imports, by commodity	24
14 International merchandise trade, by country and country groups	27
15 International merchandise trade, by state	28

OTHER TABLES

16 Period average exchange rates per Australian dollar	29
---	----

OTHER INFORMATION

Explanatory Notes	30
Appendix - Related articles	33

TIME SERIES DATA

TIME SERIES DATA

Data available free on the ABS web site <<http://www.abs.gov.au>> include longer time series of tables in this publication and additional spreadsheets and data cubes below:

31 Merchandise exports by Broad Economic Category (BEC)

32 Merchandise exports by industry of origin (ANZSIC)

33 Merchandise imports by Broad Economic Category (BEC)

34 Merchandise imports by Balance of Payments Broad Economic Category (BoPBEC)

35 Merchandise imports by industry of origin (ANZSIC)

36 Merchandise exports, state by country and country groups

37 Merchandise imports, state by country and country groups

91 Monthly seasonal adjustment factors and forward factors for 12 months.

Trade in Services data cubes are usually updated on an annual basis - with the March issue of 5368.0 for calendar year and with the September issue for financial year.

Financial year (cat. no. 5368.0.55.003)

1 International trade in services, credits, state by financial year

2 International trade in services, credits, financial year by state

3 International trade in services, debits, state by financial year

4 International trade in services, debits, financial year by state

5 International trade in services, credits, financial year by country and service

6 International trade in services, credits, service by financial year and by country

7 International trade in services, debits, financial year by country and service

8 International trade in services, debits, service by financial year and by country

9 International trade in services, financial year by detailed service

Calendar year (cat. no. 5368.0.55.004)

1 International trade in services, credits, state by calendar year

2 International trade in services, credits, calendar year by state

3 International trade in services, debits, state by calendar year

4 International trade in services, debits, calendar year by state

5 International trade in services, credits, calendar year by country and service

6 International trade in services, credits, service by calendar year and by country

7 International trade in services, debits, calendar year by country and service

8 International trade in services, debits, service by calendar year and by country

9 International trade in services, calendar year by detailed service

ANALYSIS AND COMMENTS

BALANCE ON GOODS AND SERVICES

The trend estimate of the balance on goods and services in March 2007 was a deficit of \$1,172m, an increase of \$13m on the deficit in February.

In seasonally adjusted terms, the balance on goods and services in March 2007 was a deficit of \$1,622m, an increase of \$894m on the deficit in February.

EXPORTS OF GOODS AND SERVICES

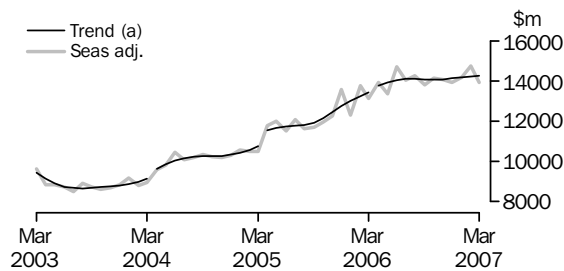
The trend estimate of goods and services credits rose \$62m between February and March to \$18,190m.

In seasonally adjusted terms, goods and services credits fell \$793m (4%) to \$17,839m. Non-rural goods fell \$695m (6%), other goods fell \$125m (11%) while rural goods rose \$8m. Services credits rose \$19m.

The sum of the seasonally adjusted balances for the three months to March 2007 was a deficit of \$3,193m, a decrease of \$562m on the deficit of \$3,755m for the three months to December 2006. However, if the seasonal factors used in compiling quarterly Balance of Payments are applied, the March quarter 2007 deficit was \$3,310m, a decrease of \$343m on the revised December quarter 2006 deficit of \$3,653m.

Exports of goods

GOODS CREDITS



(a) Trend breaks of \$300m to April 2004, \$600m to April 2005 and \$150m to April 2006 have been applied.

RURAL GOODS

The trend estimate of rural goods exports fell \$18m (1%) to \$2,060m.

In seasonally adjusted terms, exports of rural goods rose \$8m to \$2,083m.

The components contributing to the rise in the seasonally adjusted series were:

- other rural, up \$33m (4%)
- wool and sheepskins, up \$8m (3%).

Largely offsetting these effects were:

- cereal grains and cereal preparations, down \$19m (7%)
- meat and meat preparations, down \$15m (2%).

In original terms, exports of rural goods rose \$209m (11%) to \$2,175m.

ANALYSIS AND COMMENTS *continued*

Exports of goods *continued*

NON-RURAL GOODS

The trend estimate of non-rural goods exports rose \$43m to \$11,174m.

In seasonally adjusted terms, exports of non-rural goods fell \$695m (6%) to \$10,846m.

The main components contributing to the fall in the seasonally adjusted series were:

- metal ores and minerals, down \$639m (20%). Cyclone activity in Western Australia had a significant impact on iron ore exports.
- other non-rural, down \$92m (7%)
- other mineral fuels, down \$74m (6%)
- metals (excl. non-monetary gold), down \$29m (2%).

Partly offsetting these effects were:

- other manufactures, up \$71m (5%)
- machinery, up \$44m (6%)
- coal, coke and briquettes, up \$37m (2%).

In original terms, exports of non-rural goods rose \$565m (6%) to \$10,825m.

Movements in the original series contributing to the fall in seasonally adjusted terms were:

- metal ores and minerals, down \$325m (11%), compared to an average February to March rise of 18% over the previous three years, with:
 - non-agglomerated iron ore, down \$221m (18%), with volumes down 16% and prices down 2%
 - copper ore, down \$79m (27%), with volumes down 23% and prices down 5%.
- other non-rural, up \$45m (4%), compared to an average February to March rise of 21% over the previous three years.

OTHER GOODS

The trend estimate of other goods exports rose \$17m (2%) to \$1,037m.

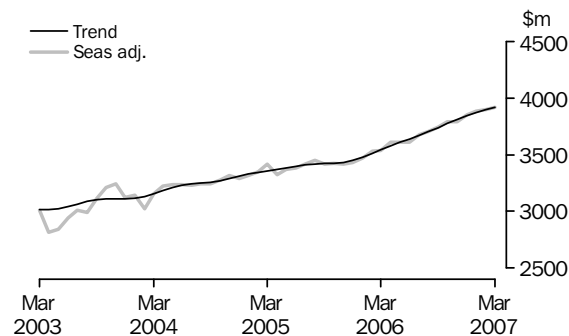
In seasonally adjusted terms, exports of other goods fell \$125m (11%) to \$991m.

The main component contributing to the fall in the seasonally adjusted series was non-monetary gold, down \$166m (17%), partly offset by goods for processing, up \$33m (118%).

In original terms, exports of other goods fell \$125m (11%) to \$988m.

Exports of services

SERVICES CREDITS



ANALYSIS AND COMMENTS *continued*

Exports of services continued

In trend terms, services credits rose \$19m to \$3,918m.

Seasonally adjusted, services credits rose \$19m to \$3,919m.

The components that contributed to the rise in the seasonally adjusted estimates were:

- travel services, up \$16m (1%)
- other services, up \$3m.

Seasonally adjusted, tourism related services credits rose \$18m (1%) to \$2,519m. This series is seasonally adjusted independently to the series that comprise services credits.

IMPORTS OF GOODS AND SERVICES

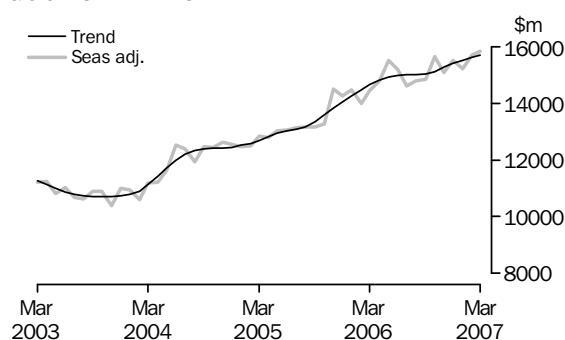
The trend estimate of goods and services debits rose \$75m between February and March to \$19,362m.

In seasonally adjusted terms, goods and services debits rose \$101m (1%) to \$19,461m. Intermediate and other merchandise goods rose \$521m (8%) and capital goods rose \$13m while other goods fell \$206m (29%) and consumption goods fell \$203m (4%). Services debits fell \$23m (1%).

Preliminary analysis shows that, in seasonally adjusted terms, goods imports volumes increased about 2.9% during the March quarter 2007 and the implicit price deflator fell about 1.6%. In original terms, the Chain Laspeyres price index fell about 1.6% and the implicit price deflator fell about 1.1%. The final volume and price outcomes will be published in the March quarter 2007 issue of *Balance of Payments and International Investment Position, Australia* (cat. no. 5302.0).

Imports of goods

GOODS DEBITS



CONSUMPTION GOODS

The trend estimate of imports of consumption goods rose \$27m (1%) to \$4,773m.

In seasonally adjusted terms, imports of consumption goods fell \$203m (4%) to \$4,691m.

The main components contributing to the fall in the seasonally adjusted estimates were:

- consumption goods n.e.s., down \$148m (9%)
- textiles, clothing and footwear, down \$33m (6%)
- food and beverages, mainly for consumption, down \$23m (3%).

In original terms, imports of consumption goods rose \$31m (1%) to \$4,409m.

ANALYSIS AND COMMENTS *continued*

Imports of goods continued

CAPITAL GOODS

The trend estimate of imports of capital goods rose \$19m (1%) to \$3,600m.

In seasonally adjusted terms, imports of capital goods rose \$13m to \$3,589m.

The components contributing to the rise in the seasonally adjusted estimates were:

- machinery and industrial equipment, up \$48m (4%)
- capital goods n.e.s., up \$41m (9%)
- telecommunications equipment, up \$24m (6%).

Largely offsetting these effects were:

- civil aircraft, down \$43m
- ADP equipment, down \$38m (6%)
- industrial transport equipment n.e.s., down \$20m (3%).

In original terms, imports of capital goods rose \$424m (14%) to \$3,448m.

INTERMEDIATE AND OTHER MERCHANDISE GOODS

The trend estimate of imports of intermediate and other merchandise goods rose \$53m (1%) to \$6,747m.

In seasonally adjusted terms, imports of intermediate and other merchandise goods rose \$521m (8%) to \$7,036m.

The main components contributing to the rise in the seasonally adjusted estimates were:

- fuels and lubricants, up \$342m (23%), with crude oil import volumes up 21% and prices up 6%
- other merchandise goods, up \$195m (229%), driven by imports of military equipment
- iron and steel, up \$41m (12%)
- other parts for capital goods, up \$39m (4%).

Partly offsetting these effects were:

- processed industrial supplies, down \$117m (7%)
- paper and paperboard, down \$12m (6%).

In original terms, intermediate and other merchandise goods rose \$1,002m (16%) to \$7,166m.

OTHER GOODS

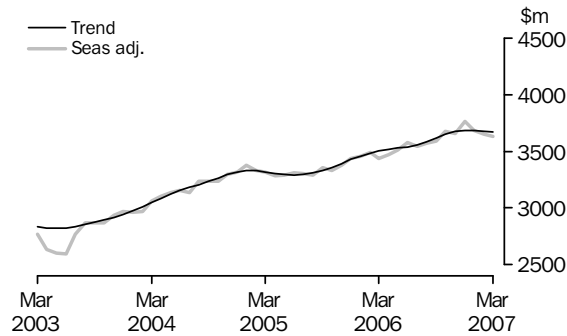
The trend estimate of imports of other goods fell \$12m (2%) to \$574m.

In both original and seasonally adjusted terms, other goods debits fell \$206m (29%) to \$515m.

The main component contributing to the fall in these estimates was non-monetary gold, down \$293m (53%), partly offset by goods for processing, up \$96m (331%).

Imports of services

SERVICES DEBITS



In trend terms, services debits fell \$11m to \$3,669m.

Seasonally adjusted, services debits fell \$23m (1%) to \$3,630m.

The components that contributed to the fall in the seasonally adjusted estimates were:

- travel services, down \$24m (2%)
- other services, down \$2m.

Partly offsetting these effects was transportation services, up \$2m.

Seasonally adjusted, tourism related services debits rose \$11m (1%) to \$1,865m. This series is seasonally adjusted independently to the series that comprise services debits.

GOODS AND SERVICES (a), Summary: Seasonally Adjusted and Trend Estimates

Months	BALANCE	CREDITS					DEBITS					
	On goods and services	Total goods and services	Total goods	Rural goods(b)	Non-rural and other goods(b)	Total services	Total goods and services	Total goods	Consumption goods	Capital goods	Intermediate and other goods	Total services
	\$m	\$m	\$m	\$m	\$m	\$m	\$m	\$m	\$m	\$m	\$m	\$m
SEASONALLY ADJUSTED												
2006												
January	-2 132	15 788	12 315	2 190	10 126	3 473	-17 920	-14 460	-4 236	-3 600	-6 625	-3 460
February	-160	17 315	13 782	2 122	11 660	3 532	-17 475	-13 982	-4 069	-3 173	-6 740	-3 493
March	-1 241	16 650	13 115	2 236	10 880	3 535	-17 891	-14 451	-4 232	-3 582	-6 638	-3 440
April	-734	17 527	13 918	2 159	11 759	3 608	-18 261	-14 792	-4 390	-3 340	-7 062	-3 469
May	-2 067	16 962	13 354	2 136	11 218	3 608	-19 029	-15 518	-4 358	-3 442	-7 718	-3 511
June	-450	18 328	14 721	2 135	12 586	3 607	-18 777	-15 198	-4 406	-3 396	-7 396	-3 579
July	-459	17 697	14 020	2 228	11 792	3 676	-18 156	-14 610	-4 404	-3 058	-7 149	-3 545
August	-412	17 935	14 234	2 235	11 999	3 701	-18 347	-14 777	-4 445	-3 260	-7 072	-3 570
September	-889	17 531	13 788	2 210	11 577	3 743	-18 420	-14 829	-4 383	-3 302	-7 143	-3 591
October	-1 404	17 925	14 133	2 205	11 928	3 793	-19 329	-15 650	-4 667	-3 453	-7 530	-3 679
November	-857	17 874	14 088	2 221	11 867	3 787	-18 732	-15 077	-4 640	-3 376	-7 061	-3 654
December	-1 494	17 776	13 923	2 098	11 824	3 853	-19 270	-15 509	-4 639	-3 684	-7 186	-3 761
2007												
January	-843	18 066	14 179	2 064	12 115	3 886	-18 909	-15 224	-4 640	-3 475	-7 109	-3 685
February	-728	18 632	14 732	2 075	12 656	3 900	-19 360	-15 706	-4 894	-3 576	-7 236	-3 653
March	-1 622	17 839	13 920	2 083	11 837	3 919	-19 461	-15 831	-4 691	-3 589	-7 551	-3 630
TREND ESTIMATES												
2006												
January	-1 224	16 495	13 018	2 142	10 875	3 477	-17 718	-14 259	-4 215	-3 511	-6 533	-3 460
February	-1 196	16 761	13 249	2 164	11 085	3 511	-17 956	-14 470	-4 241	-3 489	-6 740	-3 486
March	-1 181	16 988	13 442	2 172	11 270	3 546	-18 169	-14 664	-4 271	-3 441	-6 952	-3 506
April	-986	17 342	13 764	2 172	(c) 11 592	3 578	-18 329	-14 810	-4 301	-3 386	-7 123	-3 518
May	-918	17 528	13 920	2 173	11 747	3 608	-18 446	-14 918	-4 338	-3 339	-7 241	-3 528
June	-837	17 684	14 046	2 182	11 865	3 638	-18 521	-14 982	-4 382	-3 298	-7 302	-3 539
July	-774	17 785	14 117	2 198	11 919	3 668	-18 559	-15 001	-4 421	-3 271	-7 309	-3 558
August	-781	17 810	14 107	2 212	11 895	3 703	-18 591	-15 005	-4 456	-3 274	-7 275	-3 586
September	-828	17 823	14 084	2 214	11 870	3 739	-18 651	-15 031	-4 499	-3 312	-7 220	-3 620
October	-938	17 835	14 058	2 199	11 859	3 777	-18 773	-15 121	-4 555	-3 382	-7 184	-3 652
November	-1 051	17 883	14 071	2 168	11 903	3 812	-18 934	-15 260	-4 615	-3 455	-7 191	-3 674
December	-1 109	17 972	14 128	2 134	11 994	3 844	-19 081	-15 395	-4 668	-3 514	-7 213	-3 686
2007												
January	-1 131	18 061	14 188	2 103	12 085	3 873	-19 192	-15 506	-4 712	-3 554	-7 240	-3 686
February	-1 159	18 128	14 229	2 078	12 151	3 899	-19 287	-15 607	-4 746	-3 581	-7 280	-3 680
March	-1 172	18 190	14 272	2 060	12 212	3 918	-19 362	-15 694	-4 773	-3 600	-7 321	-3 669

(a) For sign conventions, see paragraph 9 of the Explanatory Notes.

(b) For all time periods, estimates for sugar, sugar preparations and honey are included in Non-rural and other goods.

(c) A trend break of \$150m has been applied to Non-rural and other goods credits and related aggregates in April 2006.

GOODS AND SERVICES (a), Summary: Original

	BALANCE	CREDITS					DEBITS					
	<i>On goods and services</i>	<i>Total goods and services</i>	<i>Total goods</i>	<i>Rural goods (b)</i>	<i>Non-rural and other goods (b)</i>	<i>Total services</i>	<i>Total goods and services</i>	<i>Total goods</i>	<i>Consumption goods</i>	<i>Capital goods</i>	<i>Intermediate and other goods</i>	<i>Total services</i>
	\$m	\$m	\$m	\$m	\$m	\$m	\$m	\$m	\$m	\$m	\$m	\$m
FINANCIAL YEAR												
2003-04	-21 509	147 205	109 459	24 577	84 882	37 746	-168 714	-133 018	-42 917	-32 118	-57 983	-35 696
2004-05	-22 626	167 562	127 867	25 687	102 180	39 695	-190 188	-150 873	-47 143	-35 967	-67 763	-39 315
2005-06	-14 520	196 274	154 425	25 312	129 113	41 849	-210 794	-169 716	-50 322	-39 996	-79 398	-41 078
MONTHS												
2006												
January	-2 786	14 389	10 941	1 818	9 123	3 448	-17 175	-13 562	-3 806	-3 267	-6 489	-3 613
February	293	16 088	12 484	2 025	10 459	3 604	-15 795	-12 740	-3 630	-2 677	-6 433	-3 055
March	-962	16 955	13 313	2 329	10 984	3 642	-17 917	-14 581	-4 128	-3 541	-6 912	-3 336
April	232	17 360	13 700	2 148	11 552	3 660	-17 128	-13 785	-3 944	-3 111	-6 730	-3 343
May	-2 006	17 213	13 776	2 268	11 508	3 437	-19 219	-15 868	-4 267	-3 636	-7 965	-3 351
June	-783	18 188	14 861	2 167	12 694	3 327	-18 971	-15 314	-4 288	-3 651	-7 375	-3 657
July	119	18 185	14 467	2 205	12 262	3 718	-18 066	-14 403	-4 385	-3 022	-6 996	-3 663
August	-764	18 228	14 456	2 261	12 195	3 772	-18 992	-15 462	-4 763	-3 387	-7 312	-3 530
September	-1 474	17 753	14 151	2 266	11 885	3 602	-19 227	-15 324	-4 805	-3 315	-7 204	-3 903
October	-1 800	18 668	14 735	2 277	12 458	3 933	-20 468	-16 656	-5 270	-3 649	-7 737	-3 812
November	-1 593	17 848	13 994	2 209	11 785	3 854	-19 441	-15 907	-5 140	-3 623	-7 144	-3 534
December	-221	18 569	14 693	2 200	12 493	3 876	-18 790	-14 826	-4 344	-3 651	-6 831	-3 964
2007												
January	-2 086	16 509	12 677	1 650	11 027	3 832	-18 595	-14 744	-4 364	-3 232	-7 148	-3 851
February	-167	17 323	13 339	1 966	11 373	3 984	-17 490	-14 287	-4 378	-3 024	-6 885	-3 203
March	-991	18 032	13 988	2 175	11 813	4 044	-19 023	-15 538	-4 409	-3 448	-7 681	-3 485
FINANCIAL YEAR TO DATE												
9 months ended												
March												
2006	-11 963	143 513	112 088	18 729	93 359	31 425	-155 476	-124 749	-37 823	-29 598	-57 328	-30 727
2007	-8 977	161 115	126 500	19 209	107 291	34 615	-170 092	-137 147	-41 858	-30 351	-64 938	-32 945

(a) For sign conventions, see paragraph 9 of the Explanatory Notes.

(b) For all time periods, estimates for sugar, sugar preparations and honey are included in Non-rural and other goods.

							9 MONTHS ENDED MARCH		Change %
	2003-04	2004-05	2005-06	Jan 2007	Feb 2007	Mar 2007	2006	2007	
	\$m	\$m	\$m	\$m	\$m	\$m	\$m	\$m	
Total goods credits	109 459	127 867	154 425	12 677	13 339	13 988	112 088	126 500	12.9
<i>Rural goods</i>	24 577	25 687	25 312	1 650	1 966	2 175	18 729	19 209	2.6
Meat and meat preparations	5 758	6 937	6 709	414	577	650	4 936	5 468	10.8
Cereal grains and cereal preparations	5 093	5 159	4 852	295	336	304	3 566	3 382	-5.2
Wool and sheepskins	2 778	2 838	2 544	178	276	345	1 878	2 207	17.5
Other rural (a)	10 948	10 753	11 207	763	777	876	8 349	8 152	-2.4
<i>Non-rural goods</i>	76 908	94 328	118 164	10 046	10 260	10 825	86 328	98 234	13.8
Metal ores and minerals	14 843	19 854	28 936	2 620	2 859	2 534	20 276	26 034	28.4
Coal, coke and briquettes	11 002	17 236	24 353	2 014	1 601	1 854	18 332	16 746	-8.7
Other mineral fuels	8 777	11 151	13 220	1 227	1 161	1 185	10 123	11 859	17.1
Metals (excl. non-monetary gold)	7 757	8 668	11 278	1 276	1 208	1 362	7 721	10 945	41.8
Machinery	6 837	7 488	8 087	510	617	757	6 015	6 235	3.7
Transport equipment	5 155	4 943	5 316	177	385	445	3 972	3 434	-13.5
Other manufactures	13 279	14 043	14 926	1 105	1 301	1 515	11 144	12 158	9.1
Other non-rural (incl. sugar and beverages)	9 258	10 945	12 048	1 117	1 128	1 173	8 745	10 823	23.8
<i>Other goods</i>	7 974	7 852	10 949	981	1 113	988	7 031	9 057	28.8
Goods for processing	97	241	368	36	28	61	132	310	134.8
Repairs on goods	75	67	74	5	6	10	57	62	8.8
Goods procured in ports by carriers	771	1 072	1 420	109	108	112	1 036	1 041	0.5
Non-monetary gold	7 031	6 472	9 087	831	971	805	5 806	7 644	31.7

(a) For all time periods, estimates for sugar, sugar preparations and honey are included in Other non-rural.

GOODS DEBITS (a): Original

	9 MONTHS ENDED MARCH								
	2003-04	2004-05	2005-06	Jan 2007	Feb 2007	Mar 2007	2006	2007	Change
	\$m	\$m	\$m	\$m	\$m	\$m	\$m	\$m	%
Total goods debits	-133 018	-150 873	-169 716	-14 744	-14 287	-15 538	-124 749	-137 147	9.9
<i>Consumption goods</i>	-42 917	-47 143	-50 322	-4 364	-4 378	-4 409	-37 823	-41 858	10.7
Food and beverages, mainly for consumption	-5 167	-5 767	-6 170	-627	-596	-606	-4 659	-5 563	19.4
Household electrical items	-3 793	-4 024	-4 291	-286	-308	-340	-3 233	-3 558	10.1
Non-industrial transport equipment	-12 325	-13 003	-13 589	-1 142	-1 124	-1 281	-9 921	-11 086	11.7
Textiles, clothing and footwear	-5 078	-5 811	-6 365	-639	-663	-534	-4 912	-5 324	8.4
Toys, books and leisure goods	-3 594	-3 740	-4 055	-295	-302	-326	-3 077	-3 304	7.4
Consumption goods n.e.s.	-12 960	-14 798	-15 852	-1 375	-1 385	-1 322	-12 021	-13 023	8.3
<i>Capital goods</i>	-32 118	-35 967	-39 996	-3 232	-3 024	-3 448	-29 598	-30 351	2.5
Machinery and industrial equipment	-11 069	-13 409	-14 328	-1 336	-1 121	-1 266	-10 669	-11 670	9.4
ADP equipment	-5 138	-5 761	-6 073	-515	-513	-629	-4 371	-4 937	12.9
Telecommunications equipment	-4 105	-4 568	-5 334	-359	-318	-416	-3 875	-3 898	0.6
Civil aircraft	-3 061	-2 496	-2 967	-27	-57	-14	-2 446	-959	-60.8
Industrial transport equipment n.e.s.	-4 139	-4 981	-5 495	-581	-613	-645	-4 066	-4 681	15.1
Capital goods n.e.s.	-4 606	-4 752	-5 799	-414	-402	-478	-4 171	-4 206	0.8
<i>Intermediate and other merchandise goods</i>	-54 266	-63 730	-72 722	-6 546	-6 164	-7 166	-53 139	-59 479	11.9
Food and beverages, mainly for industry	-625	-659	-651	-70	-60	-67	-478	-609	27.4
Primary industrial supplies n.e.s.	-1 079	-1 052	-1 193	-103	-123	-177	-854	-1 184	38.6
Fuels and lubricants	-9 918	-14 720	-21 014	-1 552	-1 520	-1 862	-14 749	-15 689	6.4
Parts for transport equipment	-6 547	-7 008	-7 314	-658	-639	-759	-5 408	-6 276	16.1
Parts for ADP equipment	-1 812	-1 787	-1 857	-127	-93	-124	-1 348	-1 277	-5.3
Other parts for capital goods	-8 548	-9 485	-10 154	-1 078	-897	-1 031	-7 508	-8 732	16.3
Organic and inorganic chemicals	-3 047	-3 622	-4 134	-415	-404	-397	-3 071	-3 366	9.6
Paper and paperboard	-2 242	-2 313	-2 302	-202	-188	-201	-1 755	-1 810	3.1
Textile yarn and fabrics	-1 574	-1 452	-1 361	-113	-103	-107	-1 013	-1 032	1.9
Iron and steel	-2 026	-3 008	-3 239	-358	-327	-394	-2 503	-2 860	14.3
Plastics	-2 177	-2 428	-2 517	-262	-232	-258	-1 880	-2 228	18.5
Processed industrial supplies n.e.s.	-13 437	-15 142	-15 856	-1 523	-1 493	-1 509	-11 774	-13 170	11.9
Other merchandise goods	-1 234	-1 054	-1 130	-85	-85	-280	-798	-1 246	56.1
<i>Other goods</i>	-3 717	-4 033	-6 676	-602	-721	-515	-4 189	-5 459	30.3
Goods for processing	-64	-243	-445	-51	-29	-125	-271	-514	89.7
Repairs on goods	-219	-182	-115	-10	-17	-11	-88	-103	17.0
Goods procured in ports by carriers	-802	-1 049	-1 406	-120	-120	-117	-1 029	-1 149	11.7
Non-monetary gold	-2 632	-2 559	-4 710	-421	-555	-262	-2 801	-3 693	31.8

(a) For sign conventions, see paragraph 9 of the Explanatory Notes.

GOODS CREDITS: Seasonally Adjusted

	Jun 2006	Jul 2006	Aug 2006	Sep 2006	Oct 2006	Nov 2006	Dec 2006	Jan 2007	Feb 2007	Mar 2007
	\$m	\$m	\$m	\$m	\$m	\$m	\$m	\$m	\$m	\$m
Total goods credits	14 721	14 020	14 234	13 788	14 133	14 088	13 923	14 179	14 732	13 920
<i>Rural goods</i>	2 135	2 228	2 235	2 210	2 205	2 221	2 098	2 064	2 075	2 083
Meat and meat preparations	579	582	612	605	625	634	630	649	623	608
Cereal grains and cereal preparations	406	470	503	480	403	365	328	279	290	271
Wool and sheepskins	217	231	200	224	237	235	249	269	283	291
Other rural (a)	934	945	921	901	940	986	891	867	880	913
<i>Non-rural goods</i>	11 173	10 780	10 930	10 619	10 885	11 028	10 789	11 129	11 541	10 846
Metal ores and minerals	3 230	2 881	2 898	2 855	3 020	2 951	2 965	2 798	3 238	2 599
Coal, coke and briquettes	1 970	1 952	1 980	1 803	1 755	1 842	1 808	2 015	1 823	1 860
Other mineral fuels	1 213	1 303	1 269	1 249	1 365	1 250	1 281	1 268	1 317	1 243
Metals (excl. non-monetary gold)	1 226	1 178	1 188	1 130	1 221	1 199	1 258	1 297	1 342	1 313
Machinery	714	708	702	694	688	665	672	707	682	726
Transport equipment	422	305	417	356	437	396	374	370	412	402
Other manufactures	1 281	1 347	1 310	1 298	1 297	1 426	1 271	1 423	1 412	1 483
Other non-rural (incl. sugar and beverages)	1 116	1 106	1 166	1 235	1 102	1 300	1 160	1 250	1 313	1 221
<i>Other goods</i>	1 413	1 012	1 069	958	1 043	839	1 035	986	1 116	991
Goods for processing(b)	66	67	11	36	5	52	14	36	28	61
Repairs on goods(b)	6	7	6	9	6	6	7	5	6	10
Goods procured in ports by carriers	130	118	134	118	94	113	116	114	111	115
Non-monetary gold(b)	1 211	820	918	795	938	668	898	831	971	805

(a) For all time periods, estimates for sugar, sugar preparations and honey are included in Other non-rural.

(b) This component is not seasonally adjusted.

GOODS DEBITS(a): Seasonally Adjusted

	Jun 2006	Jul 2006	Aug 2006	Sep 2006	Oct 2006	Nov 2006	Dec 2006	Jan 2007	Feb 2007	Mar 2007
	\$m	\$m	\$m	\$m	\$m	\$m	\$m	\$m	\$m	\$m
Total goods debits	-15 198	-14 610	-14 777	-14 829	-15 650	-15 077	-15 509	-15 224	-15 706	-15 831
<i>Consumption goods</i>	-4 406	-4 404	-4 445	-4 383	-4 667	-4 640	-4 639	-4 640	-4 894	-4 691
Food and beverages, mainly for consumption	-536	-552	-560	-568	-572	-653	-623	-607	-679	-656
Household electrical items	-371	-361	-381	-382	-433	-396	-387	-351	-383	-385
Non-industrial transport equipment	-1 212	-1 172	-1 244	-1 144	-1 314	-1 267	-1 279	-1 294	-1 294	-1 282
Textiles, clothing and footwear	-562	-561	-555	-562	-577	-581	-578	-566	-589	-556
Toys, books and leisure goods	-350	-345	-344	-352	-342	-351	-357	-371	-382	-393
Consumption goods n.e.s.	-1 374	-1 412	-1 362	-1 375	-1 429	-1 391	-1 415	-1 450	-1 567	-1 419
<i>Capital goods</i>	-3 396	-3 058	-3 260	-3 302	-3 453	-3 376	-3 684	-3 475	-3 576	-3 589
Machinery and industrial equipment	-1 312	-1 209	-1 234	-1 209	-1 340	-1 317	-1 271	-1 316	-1 317	-1 365
ADP equipment	-518	-534	-529	-535	-601	-559	-598	-605	-647	-609
Telecommunications equipment	-455	-453	-392	-461	-450	-470	-453	-448	-400	-424
Civil aircraft(b)	-189	-55	-232	-118	-80	-24	-352	-27	-57	-14
Industrial transport equipment n.e.s.	-441	-323	-449	-494	-516	-527	-547	-610	-706	-686
Capital goods n.e.s.	-481	-484	-424	-486	-466	-480	-464	-468	-449	-490
<i>Intermediate and other merchandise goods</i>	-6 648	-6 403	-6 617	-6 551	-6 634	-6 606	-6 709	-6 507	-6 515	-7 036
Food and beverages, mainly for industry	-56	-47	-66	-68	-68	-74	-95	-63	-70	-68
Primary industrial supplies n.e.s.(c)	-135	-98	-131	-102	-185	-115	-137	-117	-147	-152
Fuels and lubricants(b)	-2 178	-1 808	-1 992	-1 714	-1 770	-1 563	-1 908	-1 552	-1 520	-1 862
Parts for transport equipment	-628	-663	-688	-685	-719	-688	-686	-691	-719	-738
Parts for ADP equipment	-167	-145	-159	-170	-153	-154	-153	-138	-110	-117
Other parts for capital goods	-883	-895	-901	-922	-944	-956	-966	-1 090	-1 013	-1 052
Organic and inorganic chemicals(c)	-295	-372	-344	-361	-381	-579	-269	-394	-383	-376
Paper and paperboard	-195	-201	-201	-205	-184	-191	-191	-195	-205	-193
Textile yarn and fabrics	-115	-117	-115	-117	-116	-118	-115	-111	-113	-114
Iron and steel	-258	-255	-265	-292	-321	-383	-306	-348	-329	-370
Plastics	-227	-237	-242	-237	-246	-247	-256	-246	-248	-258
Processed industrial supplies n.e.s.	-1 385	-1 408	-1 426	-1 462	-1 451	-1 450	-1 472	-1 476	-1 574	-1 457
Other merchandise goods(b)	-127	-155	-85	-215	-96	-89	-156	-85	-85	-280
<i>Other goods</i>	-748	-746	-455	-592	-896	-455	-477	-602	-721	-515
Goods for processing(b)	-45	-139	-67	-1	-20	-1	-81	-51	-29	-125
Repairs on goods(b)	-7	-14	-13	-17	-6	-8	-7	-10	-17	-11
Goods procured in ports by carriers(b)	-125	-142	-142	-144	-122	-122	-120	-120	-120	-117
Non-monetary gold(d)	-571	-451	-233	-430	-748	-324	-269	-421	-555	-262

(a) For sign conventions, see paragraph 9 of the Explanatory Notes.

(b) These components are not seasonally adjusted.

(c) In using these seasonally adjusted series, care should be exercised because of the difficulties associated with reliably estimating the seasonal pattern.

(d) From October 1995, this component is not seasonally adjusted.

	Jun 2006	Jul 2006	Aug 2006	Sep 2006	Oct 2006	Nov 2006	Dec 2006	Jan 2007	Feb 2007	Mar 2007
	\$m	\$m	\$m	\$m	\$m	\$m	\$m	\$m	\$m	\$m
Total goods credits	14 046	14 117	14 107	14 084	14 058	14 071	14 128	14 188	14 229	14 272
<i>Rural goods</i>	2 182	2 198	2 212	2 214	2 199	2 168	2 134	2 103	2 078	2 060
Meat and meat preparations	577	587	599	613	623	629	632	631	629	625
Cereal grains and cereal preparations	462	467	464	446	415	376	336	304	278	261
Wool and sheepskins	216	215	216	221	231	241	254	266	278	287
Other rural (a)	927	929	933	933	930	922	912	902	894	888
<i>Non-rural goods</i>	10 673	10 768	10 817	10 860	10 887	10 932	11 008	11 080	11 131	11 174
Metal ores and minerals	2 874	2 926	2 946	2 957	2 951	2 947	2 948	2 934	2 907	2 874
Coal, coke and briquettes	1 972	1 928	1 886	1 855	1 840	1 839	1 850	1 864	1 875	1 890
Other mineral fuels	1 187	1 222	1 259	1 289	1 297	1 292	1 285	1 281	1 277	1 272
Metals (excl. non-monetary gold)	1 157	1 179	1 185	1 189	1 200	1 223	1 255	1 285	1 311	1 334
Machinery	701	700	697	692	686	683	684	689	696	704
Transport equipment	396	387	383	384	388	392	393	393	393	396
Other manufactures	1 270	1 287	1 303	1 317	1 330	1 345	1 365	1 392	1 420	1 445
Other non-rural (incl. sugar and beverages)	1 117	1 140	1 158	1 176	1 194	1 212	1 228	1 242	1 253	1 260
<i>Other goods</i>	1 192	1 151	1 079	1 010	973	971	987	1 005	1 020	1 037
Goods for processing	67	55	41	30	24	25	29	34	39	43
Repairs on goods	6	7	7	7	7	6	6	7	7	7
Goods procured in ports by carriers	130	125	120	116	113	111	111	112	113	114
Non-monetary gold	989	964	911	858	829	828	840	853	861	873

(a) For all time periods, estimates for sugar, sugar preparations and honey are included in Other non-rural.

GOODS DEBITS (a): Trend Estimates

	Jun 2006	Jul 2006	Aug 2006	Sep 2006	Oct 2006	Nov 2006	Dec 2006	Jan 2007	Feb 2007	Mar 2007
	\$m	\$m	\$m	\$m	\$m	\$m	\$m	\$m	\$m	\$m
Total goods debits	-14 982	-15 001	-15 005	-15 031	-15 121	-15 260	-15 395	-15 506	-15 607	-15 694
<i>Consumption goods</i>	-4 382	-4 421	-4 456	-4 499	-4 555	-4 615	-4 668	-4 712	-4 746	-4 773
Food and beverages, mainly for consumption	-542	-550	-561	-576	-593	-610	-626	-640	-652	-661
Household electrical items	-377	-380	-385	-391	-394	-393	-388	-382	-377	-374
Non-industrial transport equipment	-1 177	-1 197	-1 215	-1 232	-1 250	-1 267	-1 280	-1 289	-1 294	-1 300
Textiles, clothing and footwear	-557	-561	-564	-567	-571	-574	-576	-575	-574	-571
Toys, books and leisure goods	-353	-349	-346	-345	-348	-354	-361	-370	-378	-386
Consumption goods n.e.s.	-1 375	-1 383	-1 385	-1 389	-1 400	-1 417	-1 436	-1 455	-1 471	-1 481
<i>Capital goods</i>	-3 298	-3 271	-3 274	-3 312	-3 382	-3 455	-3 514	-3 554	-3 581	-3 600
Machinery and industrial equipment	-1 249	-1 247	-1 250	-1 260	-1 275	-1 291	-1 306	-1 319	-1 330	-1 340
ADP equipment	-510	-520	-534	-550	-567	-582	-596	-609	-620	-627
Telecommunications equipment	-452	-442	-440	-444	-449	-450	-447	-440	-432	-421
Civil aircraft	-152	-145	-139	-133	-131	-127	-117	-100	-76	-60
Industrial transport equipment n.e.s.	-426	-421	-431	-459	-498	-539	-580	-618	-653	-684
Capital goods n.e.s.	-509	-498	-481	-466	-462	-465	-468	-469	-470	-469
<i>Intermediate and other merchandise goods</i>	-6 551	-6 586	-6 600	-6 594	-6 585	-6 597	-6 621	-6 653	-6 694	-6 747
Food and beverages, mainly for industry	-56	-58	-62	-67	-72	-75	-75	-74	-72	-71
Primary industrial supplies n.e.s.	-113	-119	-125	-129	-132	-134	-136	-137	-139	-142
Fuels and lubricants	-2 037	-1 983	-1 906	-1 818	-1 741	-1 698	-1 680	-1 670	-1 667	-1 686
Parts for transport equipment	-654	-667	-679	-687	-693	-696	-700	-705	-712	-719
Parts for ADP equipment	-160	-159	-160	-159	-157	-152	-144	-135	-126	-117
Other parts for capital goods	-892	-897	-905	-920	-942	-969	-994	-1 018	-1 039	-1 054
Organic and inorganic chemicals	-339	-349	-367	-385	-399	-403	-399	-390	-382	-374
Paper and paperboard	-199	-199	-198	-196	-194	-193	-193	-194	-196	-197
Textile yarn and fabrics	-116	-116	-117	-117	-116	-116	-115	-114	-113	-113
Iron and steel	-250	-261	-278	-299	-317	-330	-339	-345	-350	-353
Plastics	-225	-232	-238	-243	-245	-247	-249	-251	-252	-254
Processed industrial supplies n.e.s.	-1 389	-1 413	-1 429	-1 442	-1 453	-1 467	-1 479	-1 490	-1 499	-1 505
Other merchandise goods	-123	-133	-137	-133	-124	-118	-119	-130	-147	-163
<i>Other goods</i>	-752	-723	-674	-626	-599	-594	-591	-587	-586	-574
Goods for processing	-82	-73	-59	-42	-31	-30	-39	-52	-68	-84
Repairs on goods	-11	-12	-12	-11	-10	-10	-10	-10	-11	-12
Goods procured in ports by carriers	-133	-136	-137	-135	-131	-126	-122	-119	-117	-116
Non-monetary gold	-526	-502	-466	-438	-427	-428	-421	-405	-390	-362

(a) For sign conventions, see paragraph 9 of the Explanatory Notes.

SERVICES (a)(b), Summary: Original

							9 MONTHS ENDED MARCH		Change
	2003-04	2004-05	2005-06	Jan 2007	Feb 2007	Mar 2007	2006	2007	
	\$m	\$m	\$m	\$m	\$m	\$m	\$m	\$m	
Services credits	37 746	39 695	41 849	3 832	3 984	4 044	31 425	34 615	10.2
<i>Transportation services</i>	7 530	8 002	8 208	785	746	753	6 245	6 636	6.3
Freight	758	704	608	50	50	51	439	475	8.2
Passenger and other	6 772	7 298	7 600	735	696	702	5 806	6 161	6.1
<i>Travel services</i>	20 099	21 440	22 624	2 066	2 257	2 303	17 063	18 916	10.9
<i>Other services</i>	10 117	10 253	11 017	981	981	988	8 117	9 063	11.7
Services debits	-35 696	-39 315	-41 078	-3 851	-3 203	-3 485	-30 727	-32 945	7.2
<i>Transportation services</i>	-11 970	-13 796	-14 508	-1 239	-1 130	-1 272	-10 891	-11 539	5.9
Freight	-6 056	-7 500	-7 776	-674	-614	-672	-5 891	-6 102	3.6
Passenger and other	-5 914	-6 296	-6 732	-565	-516	-600	-5 000	-5 437	8.7
<i>Travel services</i>	-12 527	-14 507	-15 090	-1 556	-1 011	-1 152	-11 308	-11 844	4.7
<i>Other services</i>	-11 199	-11 012	-11 480	-1 056	-1 062	-1 061	-8 528	-9 562	12.1
Memorandum items:									
Tourism related service credits(c)	24 072	25 584	26 728	2 479	2 631	2 685	20 298	22 208	9.4
Tourism related service debits(c)	-17 985	-20 287	-21 374	-2 083	-1 489	-1 713	-15 976	-16 943	6.1

(a) For sign conventions, see paragraph 9 of the Explanatory Notes.

(b) For more detailed trade in services by commodity, see table 11.

(c) For a more detailed explanation of tourism related services, see paragraphs 15 and 16 of the Explanatory Notes.

SERVICES (a), Summary: Seasonally Adjusted and Trend Estimates

	Jun 2006	Jul 2006	Aug 2006	Sep 2006	Oct 2006	Nov 2006	Dec 2006	Jan 2007	Feb 2007	Mar 2007
	\$m	\$m	\$m	\$m	\$m	\$m	\$m	\$m	\$m	\$m

SEASONALLY ADJUSTED

Services credits	3 607	3 676	3 701	3 743	3 793	3 787	3 853	3 886	3 900	3 919
<i>Transportation services</i>	686	701	703	712	727	724	731	743	745	745
Freight	55	53	54	55	53	53	54	53	52	53
Passenger and other	631	647	649	657	673	672	677	690	692	692
<i>Travel services</i>	1 958	1 976	1 993	2 022	2 058	2 049	2 109	2 133	2 140	2 156
<i>Other services(b)</i>	963	1 000	1 004	1 009	1 008	1 013	1 013	1 010	1 015	1 018
Services debits	-3 579	-3 545	-3 570	-3 591	-3 679	-3 654	-3 761	-3 685	-3 653	-3 630
<i>Transportation services</i>	-1 259	-1 228	-1 253	-1 252	-1 312	-1 294	-1 355	-1 287	-1 281	-1 283
Freight	-661	-652	-664	-655	-722	-693	-679	-674	-670	-671
Passenger and other	-598	-576	-589	-596	-590	-601	-677	-614	-611	-612
<i>Travel services</i>	-1 315	-1 290	-1 286	-1 301	-1 312	-1 297	-1 331	-1 326	-1 293	-1 269
<i>Other services(b)</i>	-1 006	-1 028	-1 032	-1 038	-1 056	-1 063	-1 074	-1 071	-1 080	-1 078
Memorandum items:										
Tourism related service credits(c)	2 292	2 318	2 328	2 358	2 408	2 403	2 466	2 483	2 501	2 519
Tourism related service debits(c)	-1 934	-1 805	-1 817	-1 878	-1 847	-1 846	-2 018	-1 858	-1 854	-1 865

TREND ESTIMATES

Services credits	3 638	3 668	3 703	3 739	3 777	3 812	3 844	3 873	3 899	3 918
<i>Transportation services</i>	695	699	705	712	720	727	733	739	743	746
Freight	54	54	54	54	54	54	53	53	53	53
Passenger and other	641	644	651	658	666	674	680	686	691	694
<i>Travel services</i>	1 965	1 980	1 999	2 021	2 046	2 072	2 098	2 121	2 141	2 156
<i>Other services</i>	978	989	999	1 007	1 011	1 012	1 013	1 014	1 015	1 016
Services debits	-3 539	-3 558	-3 586	-3 620	-3 652	-3 674	-3 686	-3 686	-3 680	-3 669
<i>Transportation services</i>	-1 224	-1 236	-1 255	-1 275	-1 292	-1 301	-1 306	-1 304	-1 300	-1 293
Freight	-646	-654	-666	-678	-685	-687	-684	-680	-675	-671
Passenger and other	-578	-582	-588	-597	-607	-615	-621	-624	-624	-622
<i>Travel services</i>	-1 303	-1 300	-1 299	-1 301	-1 307	-1 311	-1 311	-1 308	-1 302	-1 294
<i>Other services</i>	-1 012	-1 022	-1 032	-1 043	-1 053	-1 062	-1 069	-1 074	-1 079	-1 081
Memorandum items:										
Tourism related service credits(c)	2 300	2 317	2 337	2 363	2 392	2 423	2 451	2 477	2 500	2 517
Tourism related service debits(c)	-1 808	-1 817	-1 833	-1 853	-1 873	-1 887	-1 893	-1 892	-1 887	-1 877

- (a) For sign conventions, see paragraph 9 of the Explanatory Notes.
 (b) In using these seasonally adjusted series, care should be exercised because of the difficulties associated with reliably estimating the seasonal pattern.

- (c) For a more detailed explanation of tourism related services, see paragraphs 15 and 16 of the Explanatory Notes.

	CREDITS				DEBITS			
	<i>Jun Qtr</i>	<i>Sep Qtr</i>	<i>Dec Qtr</i>	<i>Mar Qtr</i>	<i>Jun Qtr</i>	<i>Sep Qtr</i>	<i>Dec Qtr</i>	<i>Mar Qtr</i>
	2006	2006	2006	2007	2006	2006	2006	2007
	\$m	\$m	\$m	\$m	\$m	\$m	\$m	\$m
Services	10 424	11 092	11 663	11 860	-10 351	-11 096	-11 310	-10 539
Transportation services	1 963	2 091	2 261	2 284	-3 617	-3 854	-4 044	-3 641
Passenger(c)	1 794	1 930	2 098	2 133	-1 544	-1 683	-1 661	-1 473
Freight	169	161	163	151	-1 885	-1 966	-2 176	-1 960
Other(c)	np	np	np	np	-188	-205	-207	-208
Travel services	5 561	6 040	6 250	6 626	-3 782	-4 181	-3 944	-3 719
Business	540	615	591	616	-644	-661	-605	-656
Personal	5 021	5 425	5 659	6 010	-3 138	-3 520	-3 339	-3 063
Education-related	2 625	2 860	2 480	2 828	-154	-265	-166	-162
Other	2 396	2 565	3 179	3 182	-2 984	-3 255	-3 173	-2 901
Communication services(d)	193	257	190	186	-202	-244	-221	-191
Construction services	31	31	33	28	—	—	—	—
Insurance services	176	176	176	176	-225	-225	-225	-225
Financial services	251	251	251	251	-150	-150	-150	-150
Computer and information services	330	358	408	373	-285	-331	-361	-292
Royalties and license fees	219	204	208	182	-680	-750	-841	-766
Other business services	1 317	1 318	1 530	1 363	-932	-943	-1 042	-958
Merchanting and other trade-related	204	186	194	192	-40	-52	-55	-48
Operational leasing	10	10	10	9	-199	-212	-229	-242
Miscellaneous business, professional and technical	1 103	1 122	1 326	1 162	-693	-679	-758	-668
Legal, accounting, management consulting and public relations	179	193	213	187	-98	-83	-103	-95
Advertising, market research and public opinion polling	67	56	50	51	-76	-39	-36	-37
Research and development	104	127	141	115	-44	-38	-37	-30
Architectural, engineering and other technical services	319	294	350	349	-119	-137	-129	-108
Agriculture, mining and on-site processing	69	82	84	70	-52	-34	-45	-40
Services between affiliated enterprises n.i.e.	265	248	356	272	-193	-225	-270	-211
Other	100	122	132	118	-111	-123	-138	-147
Personal, cultural, and recreational services	155	152	155	175	-252	-226	-269	-394
Audiovisual and related services	34	36	39	60	-212	-191	-224	-314
Personal, cultural and recreational services	121	116	116	115	-40	-35	-45	-80
Government services n.i.e.	228	214	201	216	-226	-192	-213	-203
Memorandum items:								
Tourism related services(e)	6 430	7 030	7 383	7 795	-5 398	-5 958	-5 700	-5 285

— nil or rounded to zero (including null cells)

np not available for publication but included in totals where applicable, unless otherwise indicated

(a) For sign conventions, see paragraph 9 of the Explanatory Notes.

(b) For more information see paragraphs 13 and 14 of the Explanatory Notes.

(c) Passenger transportation credits include other transportation services credits.

(d) Communications services includes other services n.i.e.

(e) For a more detailed explanation of tourism related services, see paragraphs 15 and 16 of the Explanatory Notes.

	Jan 2007	Feb 2007	Mar 2007	Per cent of total merchandise exports(a)	9 MONTHS ENDED MARCH	
					2006	2007
					\$m	\$m
MAJOR COMMODITIES						
011 Meat of bovine animals	261	396	448	3.2	3 337	3 774
041 Wheat	193	227	149	1.1	2 379	2 247
268 Wool and other animal hair	149	247	310	2.2	1 673	1 939
281 Iron ore and concentrates	1 257	1 259	1 038	7.5	9 309	11 478
285 Aluminium ore and concentrates	476	486	461	3.3	3 798	4 704
321 Coal, not agglomerated	2 003	1 589	1 851	13.3	18 294	16 692
333 Crude petroleum oils	573	552	628	4.5	4 733	5 830
334 Refined petroleum oils	211	219	241	1.7	2 446	2 205
343 Natural gas	473	402	351	2.5	3 125	3 988
684 Aluminium	504	470	578	4.2	3 723	4 639
781 Passenger motor vehicles	83	237	254	1.8	2 352	2 031
971 Gold, non-monetary	809	950	791	5.7	4 732	7 499
SECTION AND DIVISION OF THE SITC						
0 Food and live animals(b)						
00 Live animals other than fish, crustaceans, molluscs and aquatic invertebrates	82	58	86	0.6	630	716
01 Meat and meat preparations	414	577	650	4.7	4 936	5 469
02 Dairy products and birds' eggs	179	166	191	1.4	1 879	1 779
03 Fish (not marine mammals), crustaceans, molluscs and aquatic invertebrates, and preparations thereof(b)	98	94	94	0.7	914	886
04 Cereals and cereal preparations(b)	295	336	304	2.2	3 567	3 381
05 Vegetables and fruit	92	89	118	0.8	1 003	1 063
06 Sugars, sugar preparations and honey(b)	17	16	23	0.2	185	206
07 Coffee, tea, cocoa, spices, and manufactures thereof	18	18	22	0.2	176	180
08 Feeding stuff for animals (excl. unmilled cereals)(b)	54	59	69	0.5	635	591
09 Miscellaneous edible products and preparations	30	37	37	0.3	329	334
<i>Total Food and live animals</i>	<i>1 281</i>	<i>1 451</i>	<i>1 593</i>	<i>11.5</i>	<i>14 254</i>	<i>14 606</i>
1 Beverages and tobacco						
11 Beverages	188	247	281	2.0	2 161	2 253
12 Tobacco and tobacco manufactures	11	9	13	0.1	63	108
<i>Total Beverages and tobacco</i>	<i>199</i>	<i>256</i>	<i>294</i>	<i>2.1</i>	<i>2 224</i>	<i>2 361</i>
2 Crude materials, inedible, except fuels(b)						
21 Hides, skins and furskins, raw(b)	51	57	69	0.5	443	533
22 Oil seeds and oleaginous fruits	17	11	15	0.1	314	133
23 Crude rubber (incl. synthetic and reclaimed)	—	—	—	—	4	3
24 Cork and wood	73	114	103	0.7	780	892
25 Pulp and waste paper	14	16	21	0.2	111	137
26 Textile fibres and their wastes (not manufactured into yarn or fabric)(b)	186	289	343	2.5	2 534	2 629
27 Crude fertilisers (excl. those of Division 56) and crude minerals (excl. coal, petroleum and precious stones)	45	40	45	0.3	379	408
28 Metalliferous ores and metal scrap(b)	2 575	2 819	2 489	17.9	19 898	25 615
29 Crude animal and vegetable materials, n.e.s.	13	14	20	0.1	205	155
<i>Total Crude materials, inedible, except fuels</i>	<i>2 975</i>	<i>3 360</i>	<i>3 106</i>	<i>22.4</i>	<i>24 668</i>	<i>30 506</i>
3 Mineral fuels, lubricants and related materials						
32 Coal, coke and briquettes	2 013	1 601	1 854	13.4	18 332	16 745
33 Petroleum, petroleum products and related materials	785	773	872	6.3	7 193	8 051
34 Gas, natural and manufactured	545	492	418	3.0	3 891	4 782
<i>Total Mineral fuels, lubricants and related materials</i>	<i>3 343</i>	<i>2 866</i>	<i>3 144</i>	<i>22.6</i>	<i>29 416</i>	<i>29 578</i>

— nil or rounded to zero (including null cells)

(a) Per cent of total merchandise exports is calculated for the most recent month.

(b) Excludes exports commodities subject to a confidentiality restriction. These are included in Division 98.

					Per cent of total merchandise exports(a)	9 MONTHS ENDED MARCH	
		Jan 2007	Feb 2007	Mar 2007		2006	2007
		\$m	\$m	\$m	%	\$m	\$m
SECTION AND DIVISION OF THE SITC							
4	Animal and vegetable oils, fats and waxes(b)						
41	Animal oils and fats	16	18	15	0.1	154	160
42	Fixed vegetable fats and oils, crude, refined or fractionated(b)	4	2	3	—	45	44
43	Fats and oils (processed), waxes and inedible mixtures or preparations, of animal or vegetable origin, n.e.s.	6	5	6	—	41	48
	<i>Total Animal and vegetable oils, fats and waxes</i>	25	25	25	0.2	240	252
5	Chemicals and related products, n.e.s.(b)						
51	Organic chemicals(b)	7	12	8	0.1	80	89
52	Inorganic chemicals(b)	69	75	67	0.5	375	571
53	Dyeing, tanning and colouring materials	42	52	53	0.4	471	462
54	Medicinal and pharmaceutical products	274	316	385	2.8	2 536	2 828
55	Essential oils and resinoids and perfume materials; toilet, polishing and cleansing preparations	32	37	47	0.3	353	370
56	Fertilisers (excl. crude)	11	12	6	—	135	122
57	Plastics in primary forms(b)	29	31	34	0.2	213	256
58	Plastics in non-primary forms	22	28	32	0.2	245	274
59	Chemical materials and products, n.e.s.	58	62	80	0.6	523	597
	<i>Total Chemicals and related products, n.e.s.</i>	544	625	711	5.1	4 932	5 569
6	Manufactured goods classified chiefly by material(b)						
61	Leather, leather manufactures, and dressed furskins, n.e.s.	25	32	32	0.2	294	303
62	Rubber manufactures, n.e.s.	11	18	18	0.1	121	154
63	Cork and wood manufactures (excl. furniture)(b)	15	13	18	0.1	160	136
64	Paper, paperboard, and articles of paper pulp, of paper or of paperboard	54	55	67	0.5	505	532
65	Textile yarn, fabrics, made-up articles, nes, and related products	20	31	36	0.3	320	307
66	Non-metallic mineral manufactures, n.e.s.(b)	50	72	68	0.5	677	675
67	Iron and steel(b)	75	97	88	0.6	627	792
68	Non-ferrous metals	1 201	1 111	1 274	9.2	7 094	10 154
69	Manufactures of metals, n.e.s.	72	78	104	0.7	667	768
	<i>Total Manufactured goods classified chiefly by material</i>	1 523	1 508	1 706	12.3	10 467	13 820
7	Machinery and transport equipment(b)						
71	Power generating machinery and equipment	54	77	97	0.7	943	905
72	Machinery specialised for particular industries	107	110	156	1.1	1 094	1 157
73	Metal working machinery	9	13	16	0.1	140	126
74	General industrial machinery and equipment, n.e.s. and machine parts, n.e.s.(b)	96	117	138	1.0	1 189	1 177
75	Office machines and automatic data processing machines	90	100	107	0.8	863	887
76	Telecommunications and sound recording and reproducing apparatus and equipment	44	52	63	0.5	624	619
77	Electrical machinery, apparatus, appliances, parts (incl. non-electrical counterparts of electrical domestic equipment)	105	144	175	1.3	1 136	1 321
78	Road vehicles (incl. air-cushion vehicles)	137	314	357	2.6	3 175	2 773
79	Transport equipment (excl. road vehicles)	40	71	88	0.6	799	662
	<i>Total Machinery and transport equipment</i>	684	998	1 197	8.6	9 964	9 628

— nil or rounded to zero (including null cells)

(a) Per cent of total merchandise exports is calculated for the most recent month.

(b) Excludes exports commodities subject to a confidentiality restriction. These are included in Division 98.

	Jan 2007	Feb 2007	Mar 2007	Per cent of total merchandise exports(a)	9 MONTHS ENDED MARCH		
						
					2006	2007	
	\$m	\$m	\$m	%	\$m	\$m	
SECTION AND DIVISION OF THE SITC							
8	Miscellaneous manufactured articles(b)						
81	Prefabricated buildings; sanitary, plumbing, heating and lighting fixtures and fittings, n.e.s.	7	8	11	0.1	82	85
82	Furniture, parts thereof; bedding, mattresses, mattress supports, cushions and similar stuffed furnishings	5	8	11	0.1	101	99
83	Travel goods, handbags and similar containers	2	3	2	—	17	23
84	Articles of apparel and clothing accessories	13	21	25	0.2	190	186
85	Footwear(b)	2	3	4	—	31	31
87	Professional, scientific and controlling instruments and apparatus, n.e.s.	107	118	166	1.2	1 182	1 286
88	Photographic apparatus, equipment and supplies and optical goods, n.e.s.; watches and clocks	24	29	29	0.2	260	265
89	Miscellaneous manufactured articles, n.e.s.	149	180	208	1.5	1 569	1 715
	<i>Total Miscellaneous manufactured articles</i>	309	370	456	3.3	3 431	3 690
9	Commodities and transactions not classified elsewhere in the SITC(c)						
93	Special transactions and commodities not classified according to kind	101	104	156	1.1	1 818	1 036
95	Gold coin whether or not legal tender, and other coin being legal tender	22	21	14	0.1	95	143
96	Coin (excl. gold coin), not being legal tender	—	—	—	—	1	—
97	Gold, non-monetary (excl. gold ores and concentrates)	809	950	791	5.7	4 732	7 499
98	Combined confidential items excl. some of SITC 280 (exports only) and some of SITCs 510 and 520 (imports only)(c)	765	709	691	5.0	4 689	6 736
	<i>Total commodities and transactions not classified elsewhere in the SITC</i>	1 697	1 783	1 651	11.9	11 336	15 414
	Total merchandise exports	12 580	13 242	13 883	100.0	110 931	125 423
	Balance of Payments Adjustments	97	97	105	..	1 157	1 077
	Goods Credits (exports) on a Balance of Payments Basis	12 677	13 339	13 988	..	112 088	126 500

.. not applicable

— nil or rounded to zero (including null cells)

(a) Per cent of total merchandise exports is calculated for the most recent month.

(b) Excludes exports commodities subject to a confidentiality restriction. These are included in Division 98.

(c) Includes exports commodities subject to a confidentiality restriction.

	Jan	Feb	Mar	Per cent	9 MONTHS	
	2007	2007	2007	of total	ENDED MARCH	
	\$m	\$m	\$m	merchandise	2006	2007
			imports(a)	%	\$m	\$m
MAJOR COMMODITIES						
333 Crude petroleum oils	1 057	905	1 168	7.6	8 978	9 583
334 Refined petroleum oils	445	567	631	4.1	5 648	5 562
542 Medicaments	532	567	504	3.3	4 495	4 764
641 Paper and paperboard	180	168	182	1.2	1 550	1 589
752 Automatic data processing machines	516	514	628	4.1	4 379	4 933
759 Parts and accessories of office machines	177	147	209	1.4	1 624	1 657
764 Telecommunications equipment	415	368	477	3.1	4 223	4 358
781 Passenger motor vehicles	1 014	1 002	1 146	7.5	8 666	9 797
782 Motor vehicles for the transport of goods	468	517	471	3.1	3 153	3 819
784 Parts and accessories of motor vehicles	191	193	223	1.5	1 703	1 908
792 Aircraft and associated equipment	117	163	151	1.0	3 452	1 841
971 Gold, non-monetary	394	556	329	2.1	2 857	3 763
SECTION AND DIVISION OF THE SITC						
0 Food and live animals						
00 Live animals other than fish, crustaceans, molluscs and aquatic invertebrates	12	20	16	0.1	77	105
01 Meat and meat preparations	45	41	51	0.3	229	340
02 Dairy products and birds' eggs	34	38	47	0.3	312	343
03 Fish (not marine mammals), crustaceans, molluscs and aquatic invertebrates, and preparations thereof	114	109	94	0.6	788	950
04 Cereals and cereal preparations	38	35	41	0.3	334	409
05 Vegetables and fruit	127	107	102	0.7	884	1 027
06 Sugars, sugar preparations and honey	16	13	17	0.1	144	153
07 Coffee, tea, cocoa, spices, and manufactures thereof	72	60	73	0.5	568	655
08 Feeding stuff for animals (excl. unmilled cereals)	57	34	35	0.2	222	341
09 Miscellaneous edible products and preparations	117	127	106	0.7	899	983
<i>Total food and live animals</i>	633	585	582	3.8	4 456	5 306
1 Beverages and tobacco						
11 Beverages	87	88	99	0.6	706	911
12 Tobacco and tobacco manufactures	18	23	23	0.1	145	172
<i>Total beverages and tobacco</i>	104	110	122	0.8	851	1 083
2 Crude materials, inedible, except fuels						
21 Hides, skins and furskins, raw	—	—	—	—	1	2
22 Oil seeds and oleaginous fruits	6	6	4	—	35	60
23 Crude rubber (incl. synthetic and reclaimed)	16	12	16	0.1	125	138
24 Cork and wood	52	49	59	0.4	419	440
25 Pulp and waste paper	28	17	16	0.1	166	197
26 Textile fibres and their wastes (not manufactured into yarn or fabric)	12	11	14	0.1	107	114
27 Crude fertilisers (excl. those of Division 56) and crude minerals (excl. coal, petroleum and precious stones)	11	15	13	0.1	124	122
28 Metalliferous ores and metal scrap	33	44	94	0.6	273	528
29 Crude animal and vegetable materials, n.e.s.	30	27	29	0.2	205	235
<i>Total crude materials, inedible, except fuels</i>	189	180	245	1.6	1 455	1 835
3 Mineral fuels, lubricants and related materials(b)						
32 Coal, coke and briquettes	2	1	1	—	20	16
33 Petroleum, petroleum products and related materials(b)	1 541	1 485	1 846	12.0	14 963	15 444
34 Gas, natural and manufactured	78	72	89	0.6	141	772
<i>Total mineral fuels, lubricants and related materials</i>	1 620	1 558	1 936	12.6	15 123	16 232

— nil or rounded to zero (including null cells)

(a) Per cent of total merchandise imports is calculated for the most recent month.

(b) Excludes imports commodities subject to a confidentiality restriction. These are included in Division 98.

	Jan 2007	Feb 2007	Mar 2007	Per cent of total merchandise imports(a)	9 MONTHS ENDED MARCH	
					2006	2007
					\$m	\$m
SECTION AND DIVISION OF THE SITC						
4	Animal and vegetable oils, fats and waxes					
41	2	1	5	—	14	20
42	41	30	33	0.2	230	329
43	Fats and oils (processed), waxes and inedible mixtures or preparations, of animal or vegetable origin, n.e.s.					
	5	3	4	—	35	43
	49	35	42	0.3	280	392
5	Chemicals and related products, n.e.s.(b)					
51	313	331	322	2.1	2 254	2 553
52	103	72	75	0.5	818	813
53	51	44	49	0.3	420	456
54	637	731	638	4.2	5 478	5 760
55	Essential oils and resinoids and perfume materials; toilet, polishing and cleansing preparations					
	127	115	137	0.9	1 134	1 203
56	53	53	98	0.6	628	419
57	153	127	143	0.9	1 026	1 242
58	109	105	115	0.7	854	986
59	138	142	154	1.0	1 201	1 319
	1 684	1 721	1 732	11.3	13 813	14 752
6	Manufactured goods classified chiefly by material(b)					
61	13	12	18	0.1	111	114
62	211	181	215	1.4	1 451	1 850
63	64	65	59	0.4	454	497
64	Paper, paperboard, and articles of paper pulp, of paper or of paperboard(b)					
	232	215	233	1.5	1 970	2 067
65	Textile yarn, fabrics, made-up articles n.e.s. and related products					
	199	193	198	1.3	1 760	1 869
66	Non-metallic mineral manufactures, n.e.s.					
	186	196	197	1.3	1 637	1 763
67	Iron and steel(b)					
	358	327	394	2.6	2 503	2 860
68	Non-ferrous metals(b)					
	218	182	186	1.2	882	1 421
69	Manufactures of metals, n.e.s.(b)					
	377	357	359	2.3	3 026	3 431
	1 858	1 728	1 858	12.1	13 795	15 872
7	Machinery and transport equipment(b)					
71	Power generating machinery and equipment					
	290	272	327	2.1	2 513	2 842
72	Machinery specialised for particular industries					
	594	505	541	3.5	4 841	5 133
73	Metal working machinery					
	63	61	71	0.5	709	551
74	General industrial machinery and equipment, n.e.s. and machine parts, n.e.s.					
	1 011	766	825	5.4	6 479	7 760
75	Office machines and automatic data processing machines					
	731	697	876	5.7	6 432	7 047
76	Telecommunications and sound recording and reproducing apparatus and equipment					
	621	586	745	4.8	7 161	7 391
77	Electrical machinery, apparatus, appliances, parts (incl. non-electrical counterparts of electrical domestic equipment)(b)					
	725	689	735	4.8	5 981	6 626
78	Road vehicles (incl. air-cushion vehicles)					
	1 831	1 863	2 015	13.1	14 905	17 058
79	Transport equipment (excl. road vehicles)					
	229	243	315	2.1	4 393	2 670
	6 095	5 682	6 448	42.0	53 414	57 079

— nil or rounded to zero (including null cells)

(a) Per cent of total merchandise imports is calculated for the most recent month.

(b) Excludes imports commodities subject to a confidentiality restriction. These are included in Division 98.

				Per cent of total merchandise imports(a)	9 MONTHS ENDED MARCH	
	Jan 2007	Feb 2007	Mar 2007		
	\$m	\$m	\$m		2006	2007
SECTION AND DIVISION OF THE SITC						
8	Miscellaneous manufactured articles(b)					
81	Prefabricated buildings; sanitary, plumbing, heating and lighting fixtures and fittings, n.e.s.	50	53	50	0.3	399 492
82	Furniture, parts thereof; bedding, mattresses, mattress supports, cushions and similar stuffed furnishings	194	179	157	1.0	1 585 1 823
83	Travel goods, handbags and similar containers	50	55	37	0.2	463 484
84	Articles of apparel and clothing accessories	426	451	346	2.3	3 277 3 466
85	Footwear	122	116	91	0.6	877 961
87	Professional, scientific and controlling instruments and apparatus, n.e.s.	316	312	368	2.4	2 819 3 096
88	Photographic apparatus, equipment and supplies and optical goods, n.e.s.; watches and clocks(b)	104	100	103	0.7	1 016 1 031
89	Miscellaneous manufactured articles, n.e.s.	641	646	885	5.8	6 388 7 253
	<i>Total miscellaneous manufactured articles</i>	<i>1 904</i>	<i>1 913</i>	<i>2 036</i>	<i>13.3</i>	<i>16 823 18 605</i>
9	Commodities and transactions not classified elsewhere in the SITC(c)					
93	Special transactions and commodities not classified according to kind	3	3	5	—	26 32
95	Gold coin whether or not legal tender, and other coin being legal tender	1	—	—	—	3 4
96	Coin (excl. gold coin), not being legal tender	—	—	—	—	— 1
97	Gold, non-monetary (excl. gold ores and concentrates)	394	556	329	2.1	2 857 3 763
98	Combined confidential items excl. some of SITC 280 (exports only) and some of SITCs 510 and 520 (imports only)(c)	28	28	25	0.2	92 167
	<i>Total commodities and transactions not classified elsewhere in the SITC</i>	<i>427</i>	<i>587</i>	<i>359</i>	<i>2.3</i>	<i>2 978 3 966</i>
	Total merchandise imports	14 564	14 099	15 360	100.0	122 989 135 122
	Balance of Payments Adjustment	180	188	178	. .	1 760 2 025
	Goods Debits (imports) on a Balance of Payments Basis	14 744	14 287	15 538	. .	124 749 137 147

. . not applicable

— nil or rounded to zero (including null cells)

(a) Per cent of total merchandise imports is calculated for the most recent month.

(b) Excludes imports commodities subject to a confidentiality restriction. These are included in Division 98.

(c) Includes imports commodities subject to a confidentiality restriction.

	EXPORTS				IMPORTS				BALANCE OF MERCHANDISE TRADE	
	2005-06	March	9 months ended	9 months ended	2005-06	March	9 months ended	9 months ended	2005-06	9 months ended
		2007	March 2006	March 2007		2007	2007	March 2006		March 2007
	\$m	\$m	\$m	\$m	\$m	\$m	\$m	\$m	\$m	\$m
Belgium	1 040	103	776	951	1 479	125	1 118	1 203	-438	-252
Brazil	947	63	713	640	784	53	588	645	163	-5
Canada	1 698	115	1 307	1 287	1 993	219	1 444	1 602	-295	-315
China	18 140	1 780	13 073	16 604	23 202	1 938	17 487	20 607	-5 062	-4 003
Denmark	200	21	143	150	891	118	660	844	-691	-694
Egypt(b)	504	49	446	237	16	1	12	12	488	225
Fiji	460	31	354	298	175	10	143	120	285	178
Finland	934	155	526	1 172	818	73	614	609	116	563
France	1 184	98	930	957	5 347	316	4 219	2 811	-4 163	-1 854
Germany	1 418	131	1 071	1 092	8 677	837	6 429	6 998	-7 259	-5 905
Hong Kong (Sar of China)	2 897	246	2 099	2 357	1 651	104	1 190	1 119	1 246	1 237
India	7 382	588	5 386	7 104	1 240	107	925	1 012	6 142	6 092
Indonesia	3 982	349	2 883	3 238	4 553	385	3 145	3 408	-572	-170
Iran	348	15	196	144	37	4	28	33	311	111
Iraq	171	—	169	95	—	—	—	36	171	59
Ireland	157	15	121	139	1 852	173	1 440	1 559	-1 695	-1 420
Israel	158	13	112	134	615	54	438	470	-456	-337
Italy	1 559	164	1 146	1 385	4 186	415	3 137	3 725	-2 627	-2 340
Japan	31 082	2 573	22 760	24 634	17 334	1 557	12 696	12 994	13 749	11 641
Korea, Republic of	11 753	1 154	8 817	10 014	6 484	478	4 329	4 558	5 269	5 455
Kuwait	515	39	382	372	242	28	175	148	273	224
Malaysia	2 535	279	1 800	2 276	6 751	560	4 986	4 729	-4 216	-2 452
Mexico	835	44	626	667	938	99	675	835	-102	-167
Netherlands	2 579	311	1 843	2 211	1 314	135	995	1 126	1 265	1 085
New Zealand	8 747	810	6 654	7 089	5 481	504	4 154	4 157	3 266	2 931
Pakistan	318	19	245	249	147	16	108	114	171	135
Papua New Guinea	1 396	150	999	1 129	2 318	228	1 837	1 650	-922	-522
Philippines	878	108	672	793	806	54	595	561	72	232
Saudi Arabia	2 179	209	1 628	1 525	1 209	143	927	679	970	846
Singapore	4 203	343	3 206	3 549	10 538	884	7 247	7 672	-6 335	-4 122
South Africa	2 208	224	1 678	1 739	1 618	111	1 191	1 064	589	675
Spain	892	94	634	949	1 317	136	962	1 146	-426	-198
Sweden	422	28	334	266	2 395	185	1 735	1 695	-1 973	-1 429
Switzerland	260	103	201	664	1 571	144	1 150	1 478	-1 311	-814
Taiwan	5 909	522	4 313	4 571	3 811	342	2 769	3 247	2 098	1 324
Thailand	4 230	415	2 945	3 025	5 388	695	3 914	5 494	-1 158	-2 469
Turkey	385	96	299	414	354	30	254	340	31	74
United Arab Emirates	1 647	235	1 102	1 620	667	70	416	1 200	980	420
United Kingdom	7 792	473	5 080	4 953	5 968	546	4 557	5 145	1 824	-191
United States of America	9 785	873	7 011	7 325	22 762	2 301	16 811	18 576	-12 977	-11 251
Viet Nam	915	132	489	1 296	4 134	394	2 885	3 743	-3 220	-2 446
Other Countries	7 849	711	5 764	6 109	6 440	789	4 605	5 957	1 408	152
Total	152 492	13 883	110 931	125 423	167 503	15 360	122 989	135 122	-15 011	-9 699
APEC	109 798	9 963	80 203	90 602	120 080	11 055	87 493	96 731	-10 282	-6 129
ASEAN	16 869	1 637	12 084	14 273	33 242	3 106	23 465	26 504	-16 374	-12 231
Developing Countries	75 895	7 143	55 368	64 677	77 265	6 849	55 716	63 752	-1 370	925
Least Developed Countries	1 537	101	1 154	1 154	341	21	290	197	1 197	957
European Union(c)	18 693	1 624	12 997	14 506	36 259	3 267	27 381	28 649	-17 566	-14 144
OECD	83 166	7 390	60 620	66 605	93 778	8 687	69 337	73 746	-10 613	-7 141

— nil or rounded to zero (including null cells)

(a) See Time series spreadsheets for details of all countries.

(b) Exports of Alumina to Egypt are excluded from country total and included in the 'Other Countries' category.

(c) From July 2004, European Union includes 25 member countries.

	2005-06		9 MONTHS ENDED MARCH	
	March		2006	2007
	2005-06	2007	2006	2007
	\$m	\$m	\$m	\$m
EXPORTS (a)				
New South Wales	26 840	2 367	19 896	21 112
Victoria	18 929	1 872	13 951	15 271
Queensland	35 385	2 971	25 966	26 694
South Australia	9 026	740	6 468	6 443
Western Australia	47 939	4 697	34 581	44 667
Tasmania	2 893	282	2 082	2 705
Northern Territory	2 644	238	1 809	3 037
Australian Capital Territory	9	—	9	6
State not available for publication(b)	710	85	500	629
Re-exports	8 118	632	5 670	4 859
Total exports	152 492	13 883	110 931	125 423
IMPORTS				
New South Wales	64 885	5 905	47 993	52 562
Victoria	49 010	4 271	36 898	38 353
Queensland	24 863	2 383	18 369	20 182
South Australia	6 243	576	4 646	4 993
Western Australia	19 095	1 786	12 676	16 156
Tasmania	516	38	381	475
Northern Territory	2 888	399	2 023	2 191
Australian Capital Territory	4	1	4	209
Total imports	167 503	15 360	122 989	135 122

— nil or rounded to zero (including null cells)

(a) State in which the final stage of production or manufacture occurs.

(b) Exports of Alumina to Bahrain, Egypt and Iceland are excluded from the state totals and included in 'State not available for publication category'.

PERIOD AVERAGE EXCHANGE RATES (a): Per Australian dollar

<i>Period</i>	<i>United States dollar</i>	<i>UK pound sterling</i>	<i>Euro</i>	<i>Japanese yen</i>	<i>Trade-weighted index of value of the \$A(b)</i>
FINANCIAL YEAR					
2003-04	0.7137	0.4102	0.5981	78.91	61.49
2004-05	0.7529	0.4052	0.5918	80.45	62.73
2005-06	0.7474	0.4205	0.6143	85.90	63.26
MONTHS					
2006					
January	0.7498	0.4248	0.6189	86.55	63.30
February	0.7416	0.4239	0.6203	87.42	62.90
March	0.7277	0.4170	0.6053	85.35	61.80
April	0.7350	0.4165	0.5993	86.09	62.00
May	0.7633	0.4089	0.5982	85.33	63.20
June	0.7402	0.4012	0.5842	84.80	62.00
July	0.7514	0.4075	0.5920	86.89	63.00
August	0.7630	0.4034	0.5958	88.45	63.70
September	0.7566	0.4009	0.5938	88.58	63.20
October	0.7539	0.4021	0.5975	89.46	63.20
November	0.7721	0.4040	0.5995	90.52	64.00
December	0.7861	0.4002	0.5949	92.05	64.40
2007					
January	0.7839	0.4002	0.6027	94.28	64.70
February	0.7823	0.3993	0.5981	94.29	64.40
March	0.7919	0.4067	0.5980	92.90	64.80

- (a) These exchange rates and the trade-weighted index are derived using rates provided by the Reserve Bank of Australia in respect of each trading day.
- (b) May 1970 = 100. The Trade-weighted index is reweighted annually on 1 October and on special occasions as required.

EXPLANATORY NOTES

INTRODUCTION

1 This publication presents preliminary estimates of Australia's international trade in goods and services on a balance of payments basis and merchandise import and export statistics on a recorded trade basis.

2 Merchandise trade statistics on a recorded trade basis are compiled from information submitted by exporters and importers or their agents to the Australian Customs Service (ACS). Adjustments for coverage, timing and valuation are made to recorded trade data to convert them to a balance of payments basis. The main source for services data is the quarterly Survey of International Trade in Services.

3 More comprehensive quarterly estimates of Australia's trade in goods and services, together with comprehensive details of Australia's balance of payments are included in the quarterly publication, *Balance of Payments and International Investment Position, Australia* (cat. no. 5302.0). Detailed monthly statistics on merchandise trade are available on Time Series Spreadsheets or by subscription to tailored services.

CONCEPTS, SOURCES AND METHODS

4 The conceptual framework used in compiling Australia's merchandise trade statistics can be found in *International Merchandise Trade, Australia: Concepts, Sources and Methods, 2001* (cat. no. 5489.0).

5 The conceptual framework used in compiling Australia's balance of payments statistics is based on the Fifth Edition of the International Monetary Fund's *Balance of Payments Manual* (BPM5,1993). Descriptions of the underlying concepts and structure of the balance of payments and the sources, methods and terms used in compiling the estimates are presented in *Balance of Payments and International Investment Position, Australia: Concepts, Sources and Methods, 1998* (cat. no. 5331.0). To bring merchandise trade statistics on a recorded trade basis to a balance of payments basis, timing adjustments are made to ensure that the transaction is recorded in the period in which ownership changed, rather than in the period in which the transaction was recorded by ACS. Adjustments are also made to imports to take account of distortions which arise when significant changes occur in the volume of import entries lodged but not yet processed by ACS in a given month. Chapter 6 of cat. no. 5331.0 provides more detail on the relationship between statistics on international merchandise trade on a recorded trade basis and on a balance of payments basis.

6 Both of the Concepts, Sources and Methods publications are available to download for free from the ABS website. Select *Methods, Classifications, Concepts & Standards*, then choose *ABS concepts, classifications and statistical standards* and then the catalogue numbers as above.

SEASONAL ADJUSTMENT

7 Monthly original estimates are volatile, being subject to calendar-related and large irregular influences. Seasonally adjusted estimates are derived by estimating and removing systematic calendar related effects, such as seasonal and trading day influences, from the original series. Trading day effects are removed from the original estimates prior to the seasonal adjustment process. Seasonal adjustment does not aim to remove the irregular or non-seasonal influences which may be present in any particular month. These irregular influences may reflect both random economic events and difficulties of statistical recording. The estimates of international trade in goods and services on a balance of payments basis are seasonally adjusted. The merchandise exports and imports statistics on a recorded trade basis are not.

TREND ESTIMATES

8 The month-to-month movements of the seasonally adjusted estimates may not be reliable indicators of trend behaviour because they include irregular or non-seasonal movements. Trend estimates are derived by applying a 13-term Henderson moving average to the seasonally adjusted series. The use of a 13-term Henderson average can result in revisions to the estimates for the most recent six months as additional

EXPLANATORY NOTES *continued*

TREND ESTIMATES *continued*

observations become available. Revisions can also occur because of changes in the original data and as a result of the annual re-estimation of the seasonal factors.

SIGN CONVENTION

9 In keeping with balance of payments conventions, where statistics are on a balance of payments basis, credit entries (exports) are shown without sign and debit items (imports) are shown as negative entries. For statistics on a recorded trade basis, both imports and exports are shown without sign. The calculation of percentage changes on balance of payments debit items are made without regard to sign. References to balance of payments debit items in Key Figures, Key Points, and Analysis and Comments are also made without regard to sign.

COMMODITY BREAKDOWNS OF GOODS

10 For details of the classification used for goods exports on a balance of payments basis (credits), see table 6.6 in *Balance of Payments and International Investment Position, Australia: Concepts, Sources and Methods, 1998* (cat. no. 5331.0).

11 Details of the classification of goods imports on a balance of payments basis (debits) are provided in table 6.7 in cat. no. 5331.0. Goods debits sub groups at a more detailed level than shown in Table 4 are available from the Time series spreadsheets.

12 The recorded trade statistics shown in tables 12 and 13 are classified by the Standard International Trade Classification (SITC). The first section of tables 12 and 13 show the most significant commodities (by value) at the SITC 3 digit level.

COMMODITY BREAKDOWNS OF SERVICES

13 The quarterly detailed services data published in table 11 are consistent with the monthly aggregates shown in table 9.

14 Monthly indicators for many of the services components that are only surveyed quarterly are not available. In particular, the Freight and Other transportation components of Total services credits are not available for publication on a monthly basis. The estimates for these items shown in table 9 are therefore derived by dividing the quarterly estimate by three. Where quarterly survey data are not available, freight debits are derived directly from imports data for the reference month as a difference between total merchandise cost, insurance and freight (CIF) and free on board (FOB), adjusted to reflect timing and processing adjustments. For freight credits and other transportation credits and debits, estimates are derived by extrapolating the last month's data by an average of movements for the same month over the three previous years.

TOURISM RELATED SERVICES

15 The tourism related services memorandum items provide timely indicators of the movements in tourism related activities, not an absolute measure of the level of these activities. These series are not compiled on a balance of payments conceptual basis. However, they do provide a reasonable approximation of world tourism related activities.

16 The memorandum items have been derived by re-aggregating relevant components of the international trade in services series of the balance of payments accounts. The tourism related indicator has been derived by combining total travel services (business, education-related and other personal travel), passenger fares, and the air transport component of other transportation services which relates to agency fees and commission receipts.

SERVICES BY STATE AND BY PARTNER COUNTRY

17 Annual services data by state and by partner country are released twice yearly. Calendar year data are usually released with the March issue of this publication and financial year data are released with the September issue. Refer to Time Series Data for details.

18 Services credits are classified by the state of provision, while services debits are classified by the state of consumption. The state allocations for transportation, travel and communication services are based on a number of indicators including merchandise trade statistics by state, overseas passenger arrivals and departures by state of clearance

EXPLANATORY NOTES *continued*

SERVICES BY STATE AND BY PARTNER COUNTRY *continued*

and data provided by the Department of Education, Science and Training. The allocation for other services (about 25% of all trade in services) is primarily based on the location of the business reporting the information, which serves as a proxy for the state of provision/consumption of that service. The data should be used with care but are considered suitable for analysis over time.

19 A comprehensive explanation of the data sources used and the methodology applied in the compilation of partner country statistics is provided in Chapter 17 of *Balance of Payments and International Investment Position, Australia - Concepts, Sources and Methods* (cat. no. 5331.0). Approximately 7% of total services credits and 5% of total services debits for 2005–06 are either confidential, or unable to be allocated to individual countries.

ABS DATA AVAILABLE

20 More detailed balance of payments and recorded merchandise trade data, including forward seasons factors are available as time series spreadsheets or data cubes from the ABS website.

21 More detailed merchandise trade data by commodity, country and state, and statistics included in this and related publications are available on request. Inquiries should be made to the National Information and Referral Service as shown on the back of this publication.

RELATED PRODUCTS AND PUBLICATIONS

22 Users may also wish to refer to the following publications which can be downloaded free of charge from the ABS web site:

- *Balance of Payments and International Investment Position, Australia* (cat. no. 5302.0) – issued quarterly
- *International Merchandise Imports, Australia* (cat. no. 5439.0) – issued monthly
- *International Trade Price Indexes, Australia* (cat. no. 6457.0) – issued quarterly
- *Balance of Payments and International Investment Position, Australia: Concepts, Sources and Methods* (cat. no. 5331.0)
- *Information Paper: Quality of Australian Balance of Payments Statistics* (cat. no. 5342.0)
- *International Merchandise Trade, Australia: Concepts, Sources and Methods* (cat. no. 5489.0)
- *A Guide to Australian Balance of Payments and International Investment Position Statistics* (cat. no. 5362.0.55.001).

23 Current publications produced by the ABS are listed in the Catalogue of Publications and Products (cat. no. 1101.0). The Catalogue is available from any ABS office or from this site. The ABS also issues a daily Release Advice on the web site which details products to be released in the week ahead.

CAUTIONARY NOTE

24 The tables in this publication are presented on two bases. Tables 1–11 contain estimates of Australia's international trade in goods and services which have been adjusted for coverage, valuation and timing to a balance of payments basis. Tables 12–15 contain estimates of merchandise exports and imports based on Australian Customs Service records. Paragraph 5 of the Explanatory Notes provides an explanation of the difference between these bases.

ROUNDING

25 Where figures have been rounded, discrepancies may occur between sums of the component items and totals. Percentage movements are calculated from data at the level of precision presented in this publication (i.e. \$m) except for international merchandise trade tables.

APPENDIX RELATED ARTICLES

<i>Article</i>	<i>Source(a)</i>	<i>Issue</i>
Investment		
Foreign ownership of equity	5302.0	Sep qtr 2006
Kangaroo bonds	5302.0	Sep qtr 2004
Gross external debt	5302.0	Sep qtr 2003
Measuring Australia's foreign currency exposure	5302.0	Dec qtr 2001
Balance of payments		
International comparison of balance of payments statistics	(b) 5363.0	1999–2000
The Sydney Olympic Games Update	5368.0	Jul 2000
The Sydney Olympic Games	5302.0	Sep qtr 1999
Merchandise trade		
Number and characteristics of Australian exporters	5368.0.55.006	2005–2006
New methodology for deriving counts of Australian exports	5368.0	Feb 2006
Export and Import Invoice Currencies, 2005	5368.0	Jun 2005
Australia's Importers, 2003–04	5368.0	Nov 2004
Australia's Exporters, 2003–04	5368.0	Oct 2004
Australia's Trade with the USA	5368.0	Mar 2004
Trade through Australia's ports	5422.0	Sep qtr 2002
Australia's trade in wine	5422.0	Dec qtr 2001
Australia's export markets, 1991–92 to 2000–01	5422.0	Jun qtr 2001
Major commodities traded by Australia, 1991 to 2000	(b) 5422.0	Dec qtr 2000
Australia's trade in crude petroleum	5422.0	Mar qtr 2000
Australia's merchandise trade with the Republic of Korea	5422.0	Sep qtr 1999
Australia's merchandise trade with Japan	5422.0	Mar qtr 1999
Bilateral merchandise trade statistics reconciliation: Australia and the European Union, 1992 to 1997	5422.0	Sep qtr 1998
Trade in services		
International trade in services by partner country, 2006, preliminary	5368.0	Dec 2006
Changes to International Trade in Services Statistics, August 2006	5368.0	Aug 2006
Changes to International trade in services travel statistics	5368.0	Aug 2005
International trade in education services	5302.0	Sep 2001
Finance		
Impact of 2003–2004 farm season on Australian production	1350.0	Oct 2003
Recent trends in construction and first home buyers finance	5609.0	Mar 2002
Household sector data in the financial accounts	5232.0	Mar qtr 2002
Investment Managers	5655.0	Jun qtr 2000
Venture capital, 1999–2000	5611.0	2000–01
Technical information		
Changes on 1 January 2007 to Statistical Codes in the AHECC and the Customs Tariff	1233.0.55.001	Nov 2006
ABS implementation in January 2007 of revisions to international trade classifications, 2007	5368.0.55.005	June 2006
Revised Treatment of Goods for Processing in Merchandise Trade and Balance of Payments Statistics	5368.0	May 2006
Impact of Customs and ABS changes on import statistics from October 2005	5439.0	Oct 2005
ABS Management of the Impact of the Implementation of the Imports Component of the New Customs System	5439.0	Aug 2005
Changes to country and port classifications	5368.0	May 2003
Implementation of New Customs Systems	5368.0	Aug 2004
The effect of customs changes on export statistics	5422.0	Jun qtr 2002
Harmonized system changes	5422.0	Sep qtr 2001
International trade review: data quality and client queries	5422.0	Jun qtr 2000
Data confidentiality	5422.0	Dec qtr 1999

(a) In the ABS web site home page, select Key Products; Papers & Articles; ABS Articles; Feature Articles by Catalogue Number.

(b) This article can be found in pdf format by referring to the Details page of the specified issue of this publication on the ABS web site and click on Download Now.

FOR MORE INFORMATION . . .

INTERNET **www.abs.gov.au** the ABS web site is the best place for data from our publications and information about the ABS.

LIBRARY A range of ABS publications are available from public and tertiary libraries Australia wide. Contact your nearest library to determine whether it has the ABS statistics you require, or visit our web site for a list of libraries.

INFORMATION AND REFERRAL SERVICE

Our consultants can help you access the full range of information published by the ABS that is available free of charge from our web site, or purchase a hard copy publication. Information tailored to your needs can also be requested as a 'user pays' service. Specialists are on hand to help you with analytical or methodological advice.

PHONE 1300 135 070
EMAIL client.services@abs.gov.au
FAX 1300 135 211
POST Client Services, ABS, GPO Box 796, Sydney NSW 2001

FREE ACCESS TO STATISTICS

All statistics on the ABS web site can be downloaded free of charge.

WEB ADDRESS www.abs.gov.au



2536800003074

ISSN 1328 2778

RRP \$26.00